

Reliable Cyber-Physical Systems with Smartphone Cameras

Sun Bangjie

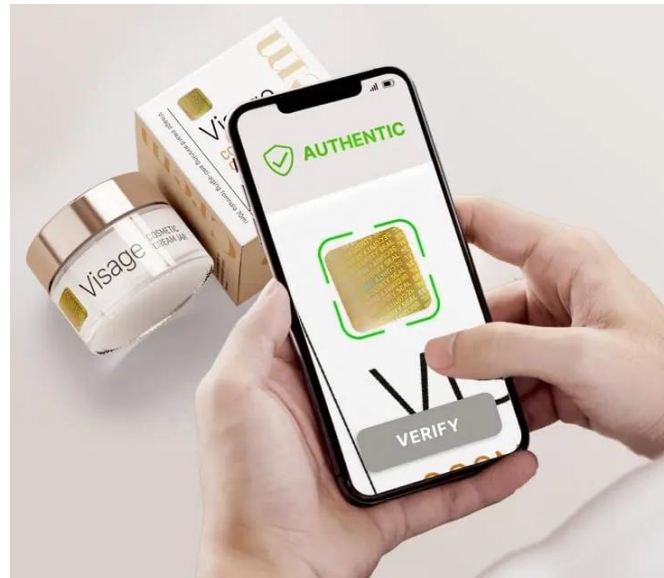
Advisor:
Prof. Chan Mun Choon

Introduction to Cyber-Physical Systems (CPS)

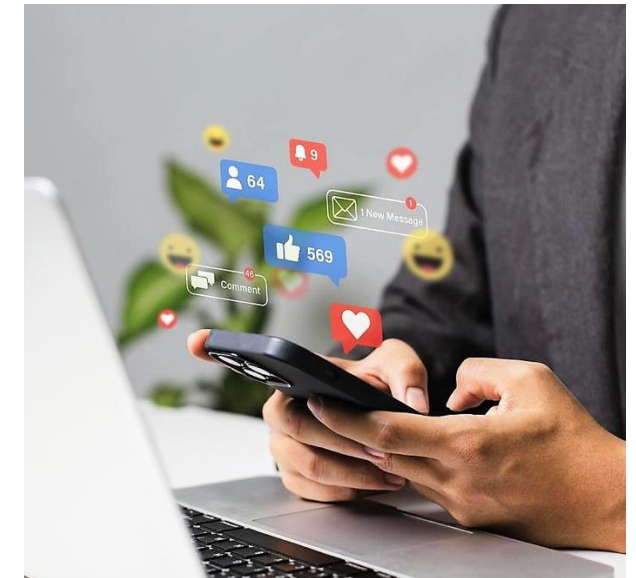
Cyber-physical systems (CPS) are everywhere and impact everyday applications.



Augmented Reality



Product Authentication



Information Sharing

Pitfalls of Current Vision-based CPS

Current vision-based CPS face **reliability** challenges.



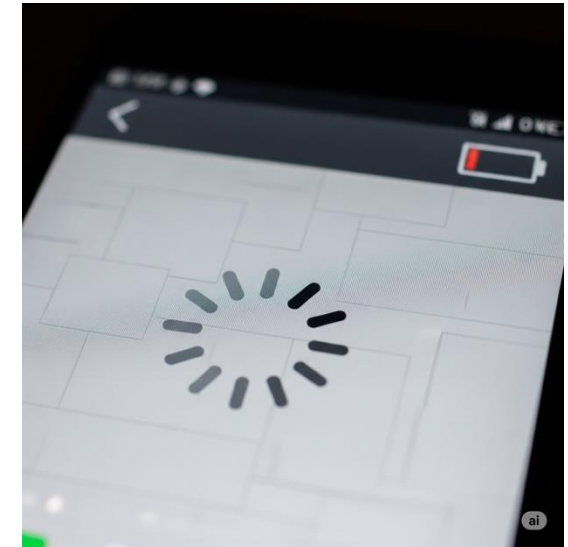
Data Integrity

(e.g., manipulation and spoofing)



Data Uncertainty

(e.g., deceiving physical appearance)



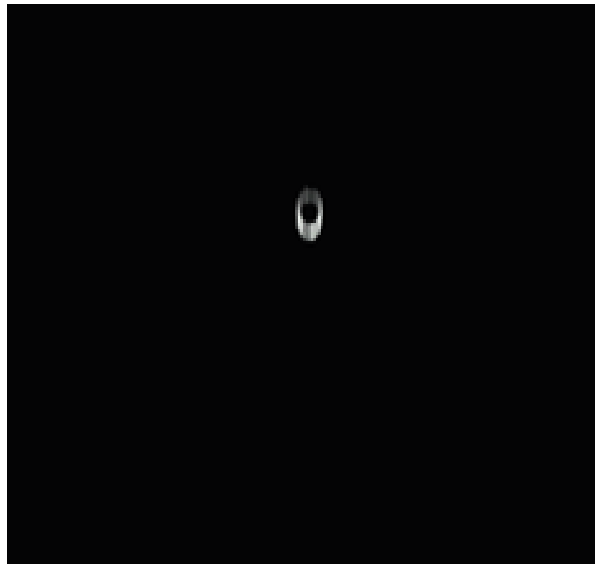
Computation

(e.g., limited processing power)

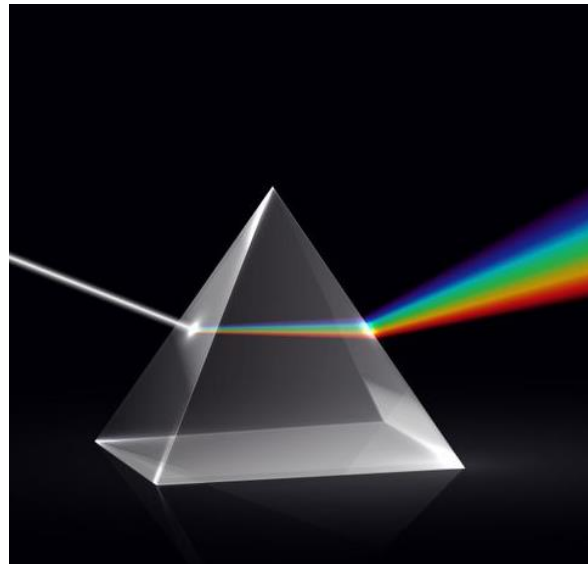
Opportunity: Inherent Physical Characteristics

We can leverage the **unique**, **persistent** and **resistant** physical characteristics of real-world objects.

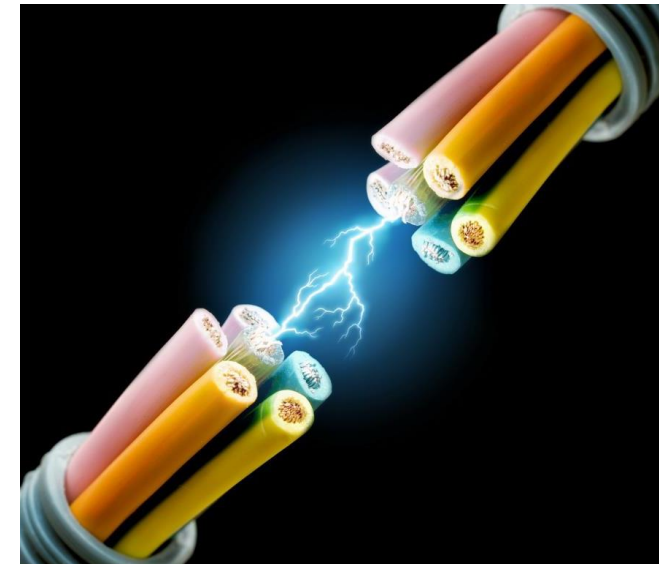
Physical Hash



Mechanical



Optical



Electrical

Research Overview

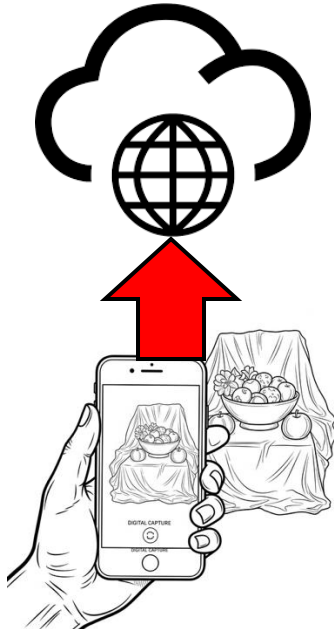
My research is about building **reliable** vision-based CPS by utilizing **physical hash** to fortify **cyber-physical connections**



Research Overview

My research is about building **reliable** vision-based CPS by utilizing **physical hash** to fortify **cyber-physical connections**

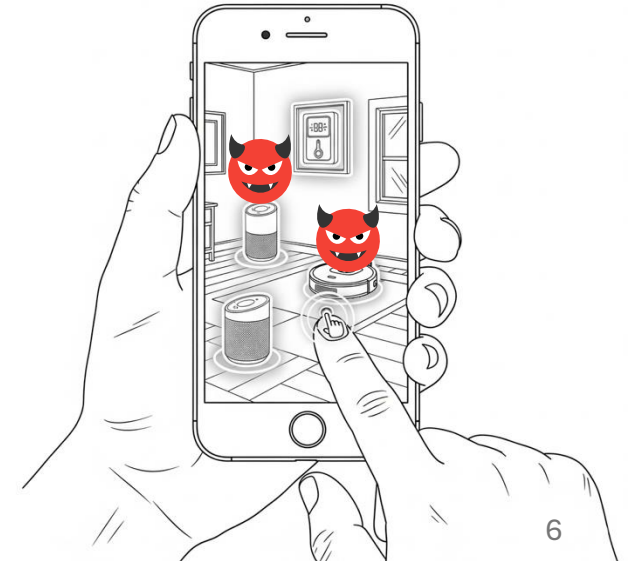
**Physical Product
Authentication**



**Digital Content
Owner Attribution**



**Discovery of
Vulnerability**



Physical Product Authentication

Physical Product Authentication



Best Poster

Liquid Form
[MobiSys'22]



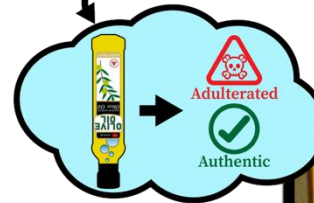
Best Paper

Textile Form
[SenSys'23]

Powder Form
[MobiSys'24]



Manufacturer's
Cloud



Liquid Testing

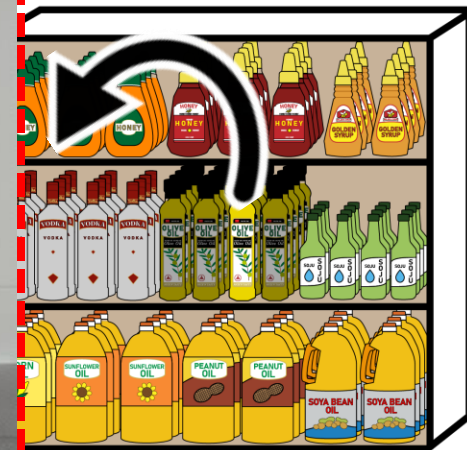
[MobiSys'22]



USER



SUPERMARKET



Digital Content Owner Attribution

Digital Content Owner Attribution



Best Poster

Photo Theft
[MobiSys'25]

Generative AI
[Submitted]

Digital Arts
[Ongoing]



[MobiSys'25]



Sync

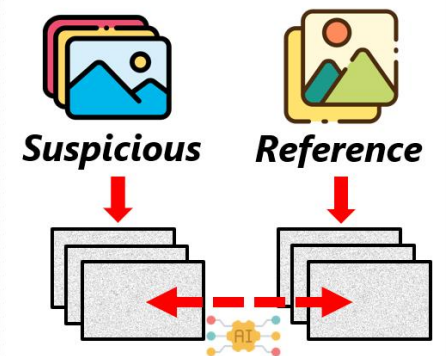


Charlie provides
reference photos
taken by his device

① Coarse-Grained Detection



② Fine-Grained Detection



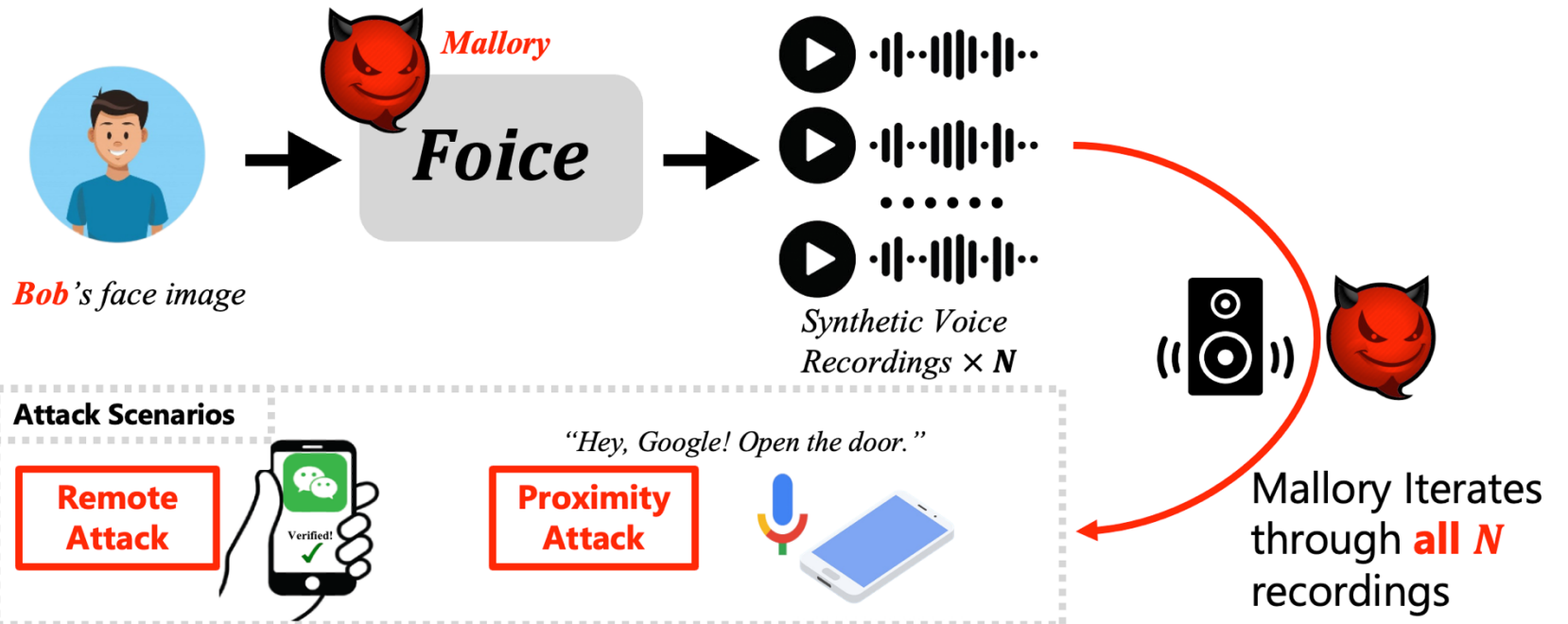
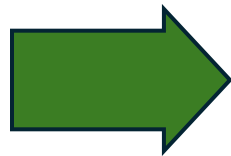
Notify
Charlie

Discovery of Vulnerability

Discovery of Vulnerability

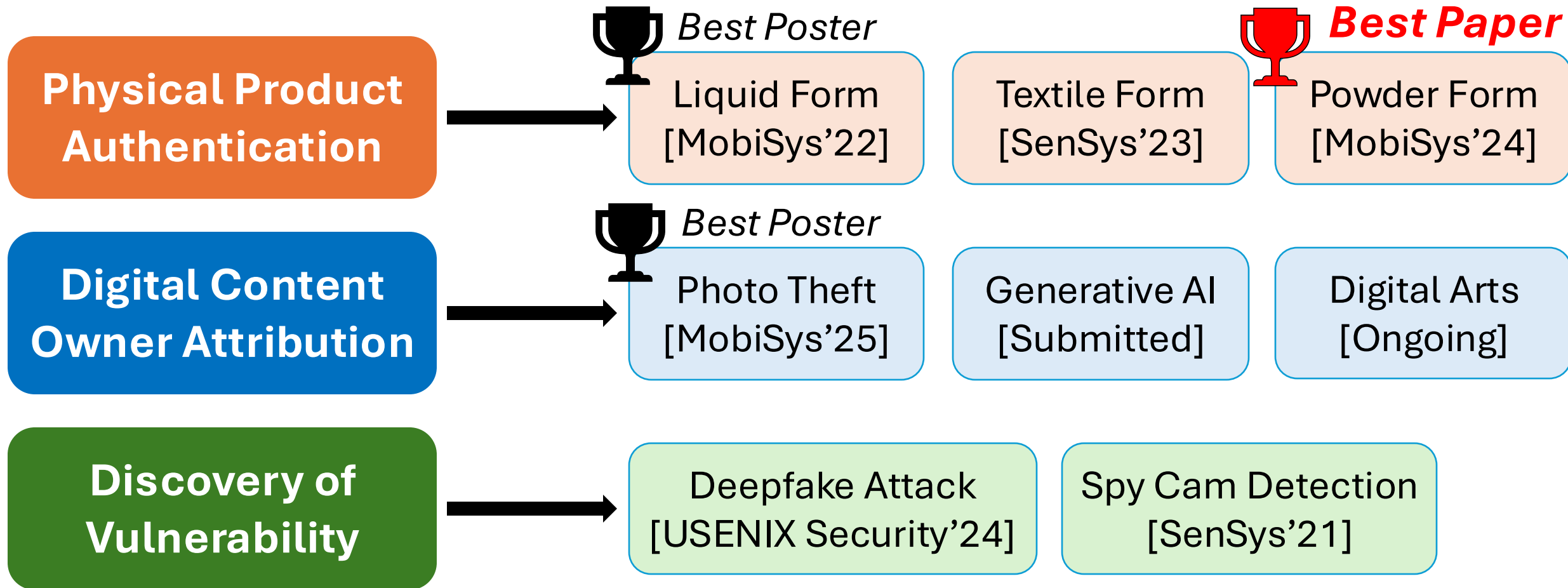
Deepfake Attack
[USENIX Security'24]

Spy Cam Detection
[SenSys'21]



[USENIX Security'24]

Research Summary



J.A.R.V.I.S. for Iron Man



Sense and connect with both worlds.

My research is making this a reality by enabling camera to
detect inherent physical characteristics.

Thank you!



Scan me